



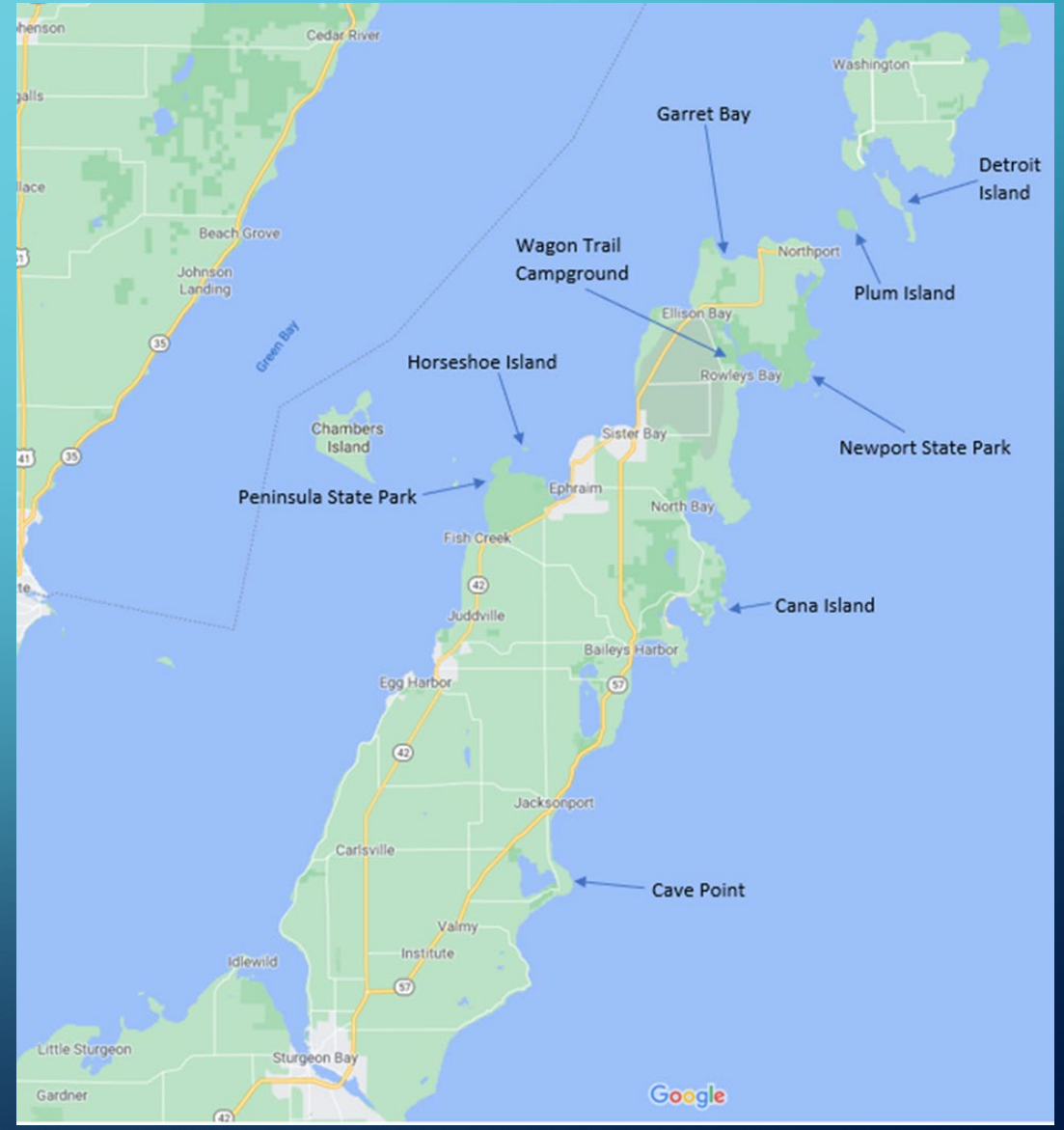
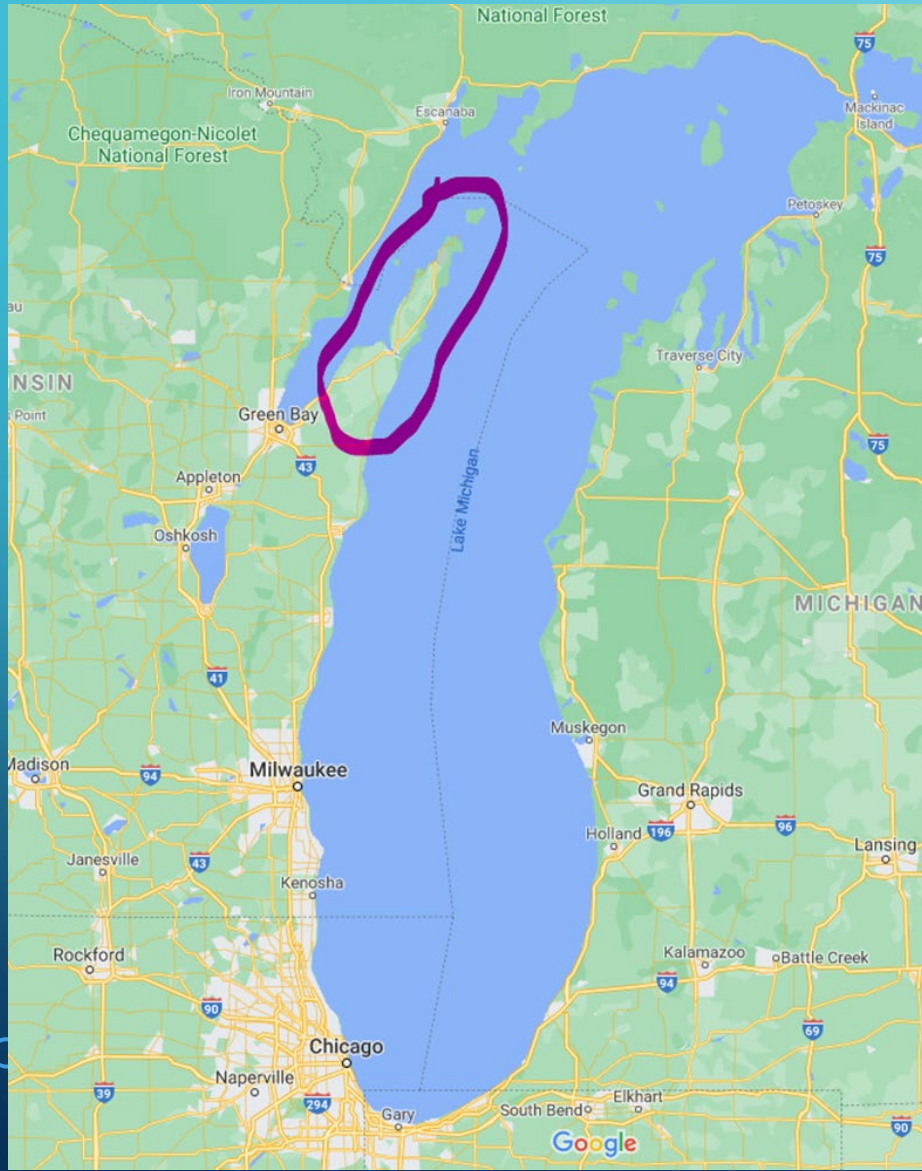
# **AN INTRODUCTION TO DOOR COUNTY, WI**

**ARNALDO RODRÍGUEZ**

**12JAN2022**



# WHERE IS DOOR COUNTY?



# WHAT DOES DOOR COUNTY HAVE TO OFFER?

- 300 miles of shoreline
- Towering bluffs, calm bays, rivers, estuaries, 34 named islands, pebble beaches, shipwrecks
- 5 state parks and 19 county parks
  - Newport State Park, an International Dark Sky spot
  - Peninsula State Park, the most popular in WI
- 11 historic lighthouses
- Farms offering pick-your-own cherries
- Dozens of small cities, towns and communities to explore
- Art galleries, local breweries and wineries
- Unique restaurants (no national/regional chains)
  - Al Johnson's Swedish Restaurant
  - Wilson's Restaurant & Ice Cream Parlor (est. 1906)
  - Fish boils
- Great kayaking opportunities, of course!



# CANA ISLAND





# CAVE POINT







# NEWPORT BEACH STATE PARK WITH PLUM AND WASHINGTON ISLANDS IN THE BACKGROUND

# WASHINGTON ISLAND FERRY AT NORTHPORT





# GARRET BAY





# WASHINGTON ISLAND





# SCENIC ROAD TO NORTHPORT





# EAGLE BLUFF LIGHTHOUSE AT PENINSULA STATE PARK AND HORSESHOE ISLAND







# HORSESHOE ISLAND





EPHRAIM'S EAGLE HARBOR WITH PENINSULA STATE PARK  
GOLF COURSE IN THE FOREGROUND





SCHOOLHOUSE  
BEACH,  
WASHINGTON  
ISLAND





# SISTER BAY





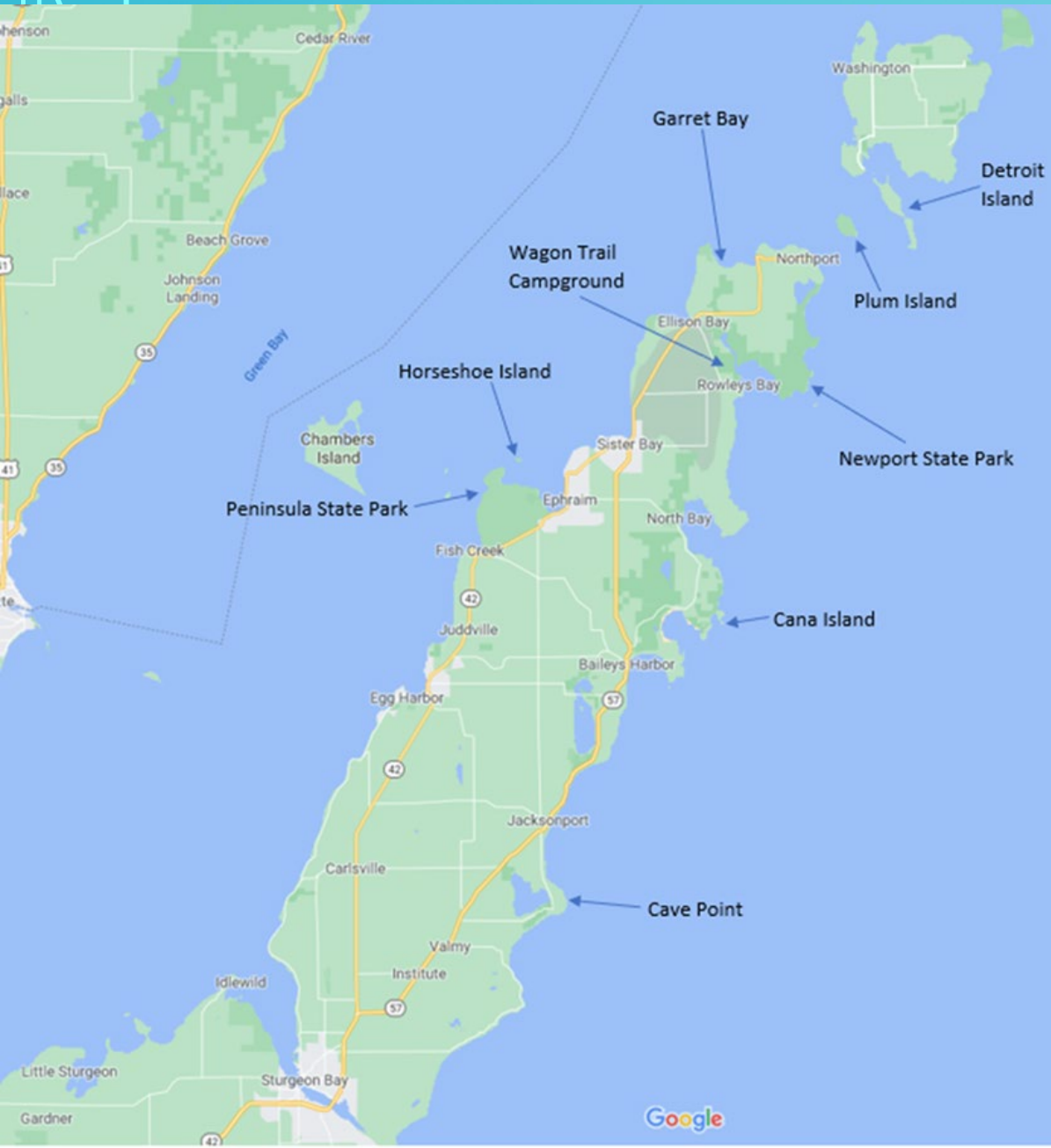
# HCKC INAUGURAL TRIP TO DOOR COUNTY

- August 1-6, 2021
- 16 paddlers
- 4 days of great paddling





# HCKC INAUGURAL TRIP TO DOOR COUNTY



- Day 1: Fish Creek to Ephraim (10 miles)
- Day 2: Ephraim to Ellison Bay (11.5 miles)
- Day 3: Ellison Bay to Northport (9 miles)
- Day 4: Cave Point to Bailey's Harbor (13 miles)





WE STAYED AT WAGON  
TRAIL CAMPGROUND NEAR  
ROWLEY'S BAY





AT WILSON'S RESTAURANT AND ICE CREAM





## LUNCH BREAK AT NICOLET BAY





# CIRCUMNAVIGATING HORSESHOE ISLAND







CAVE POINT WITH WHITEFISH DUNES STATE PARK  
IN THE DISTANCE





LIVE GOATS ON THE  
ROOF OF AL  
JOHNSON'S SWEDISH  
RESTAURANT,  
SISTER BAY

























# THE LAKE IS BOSS

We had ideal conditions during the 4 days we paddled. However, the conditions changed one day after the group left as seen in this picture taken from Whitefish Dunes State Park.